



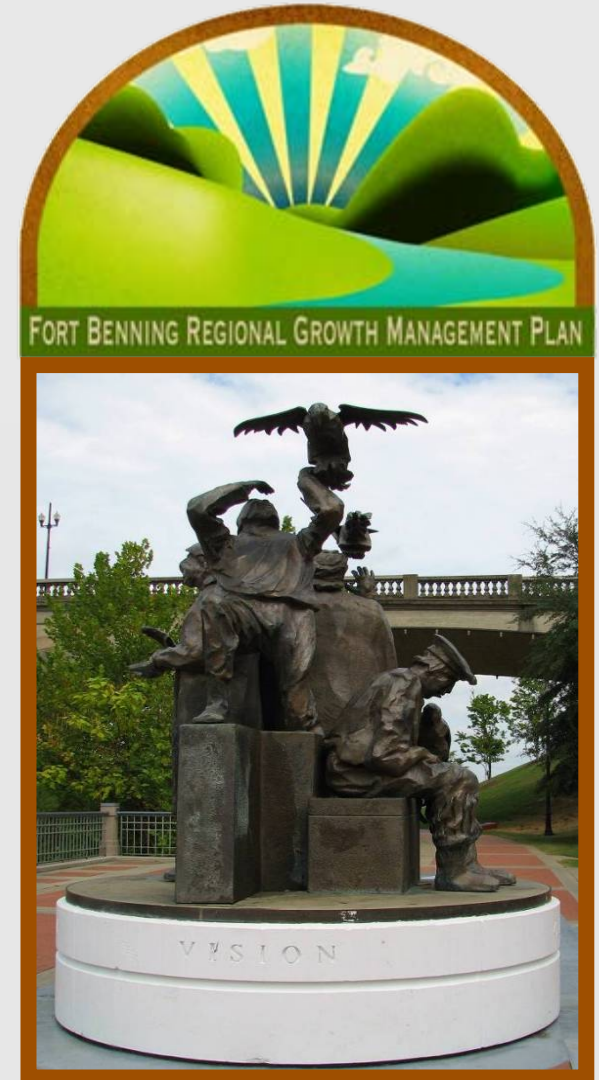
The Fort Benning Regional Growth Management Plan is funded by a grant from the Department of Defense, Office of Economic Adjustment; an agency charged with helping BRAC-affected communities adjust to the impacts of mission changes at military installations

Fort Benning

REGIONAL GROWTH MANAGEMENT PLAN

Transportation Task Force Meeting

September 11, 2008



In association with:



EDAW

AECOM

MARKET ST

RKG
ASSOCIATES INC

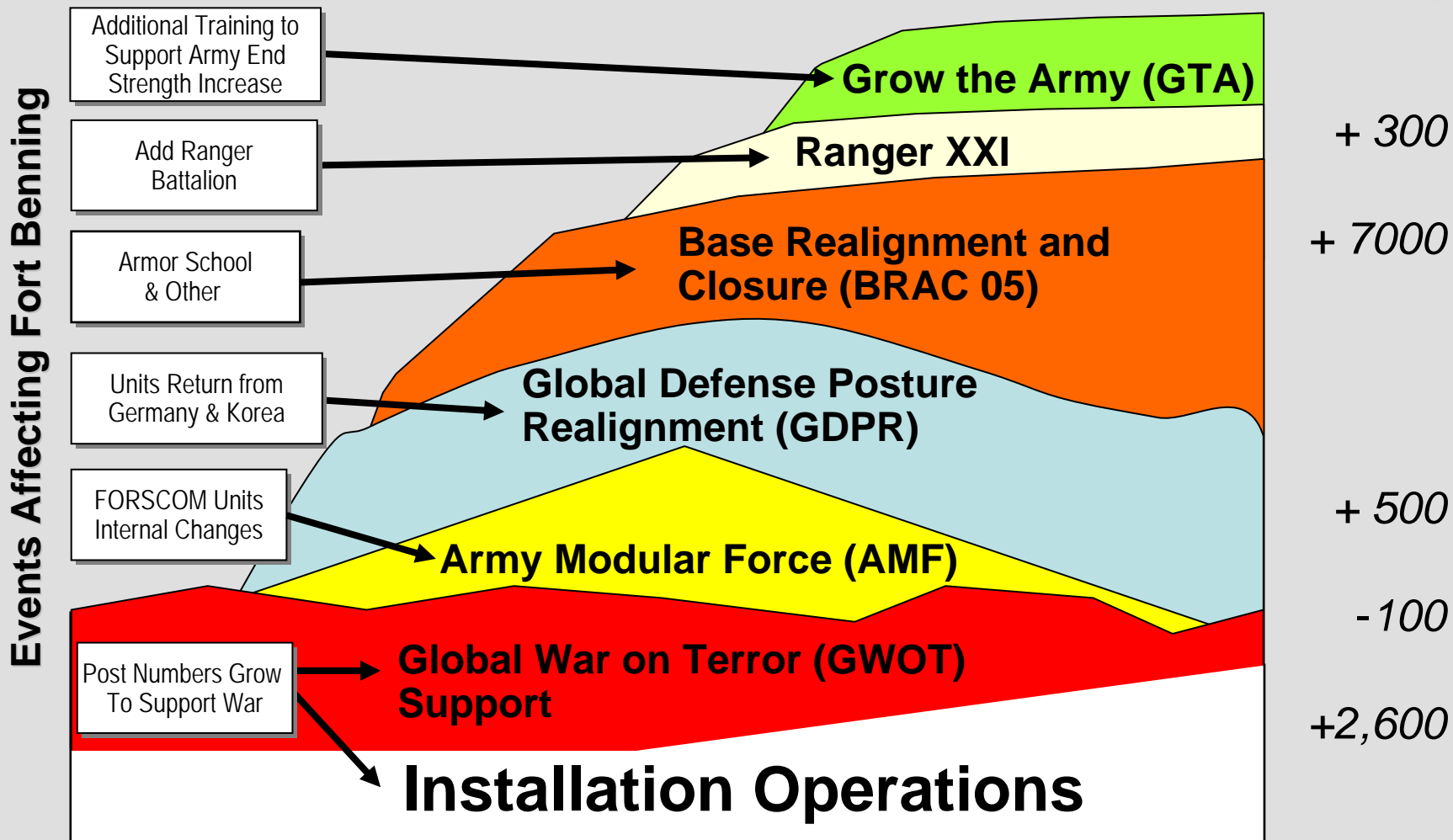
NAVIGANT
CONSULTING

Regionalism is the Key

"Coordination and Synchronization Continue To Be Our Greatest Strengths"
Major General Walter Wojdakowski
Commanding General, Fort Benning, Alabama and Georgia



Fort Benning Transformation



Project Purpose

RGMP Study Area:
(10 Counties – 35 Mile Radius)

Ten County Study Area:

Georgia

- Columbus - Muscogee
- Cusseta - Chattahoochee
- Harris
- Marion
- Talbot
- Taylor
- Stewart

Alabama

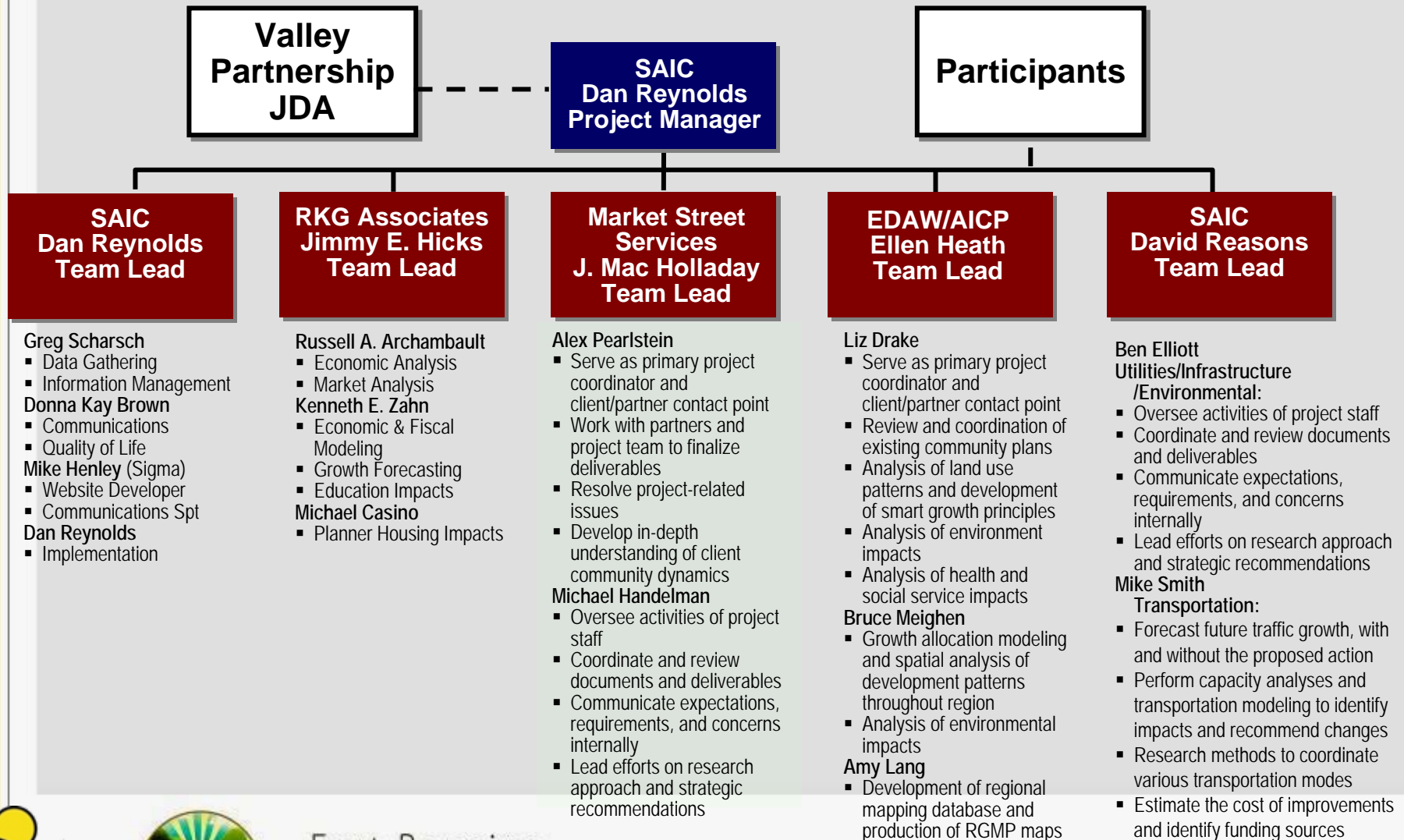
- Barbour
- Lee
- Russell



Identify:

- What growth will occur?
- Where will it occur?
- Impacts to local roadways
- Action plans to prepare

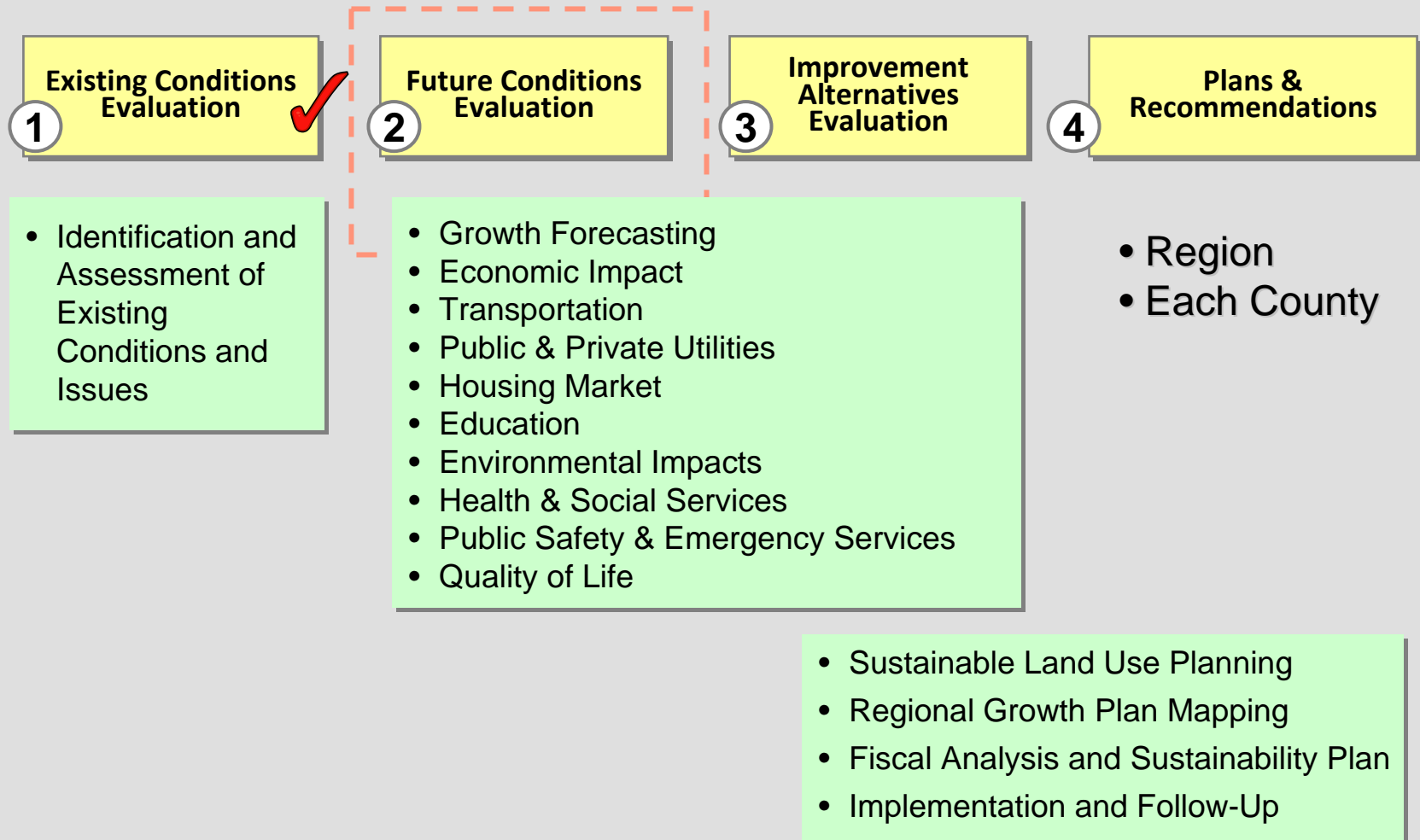
Project Team Organization



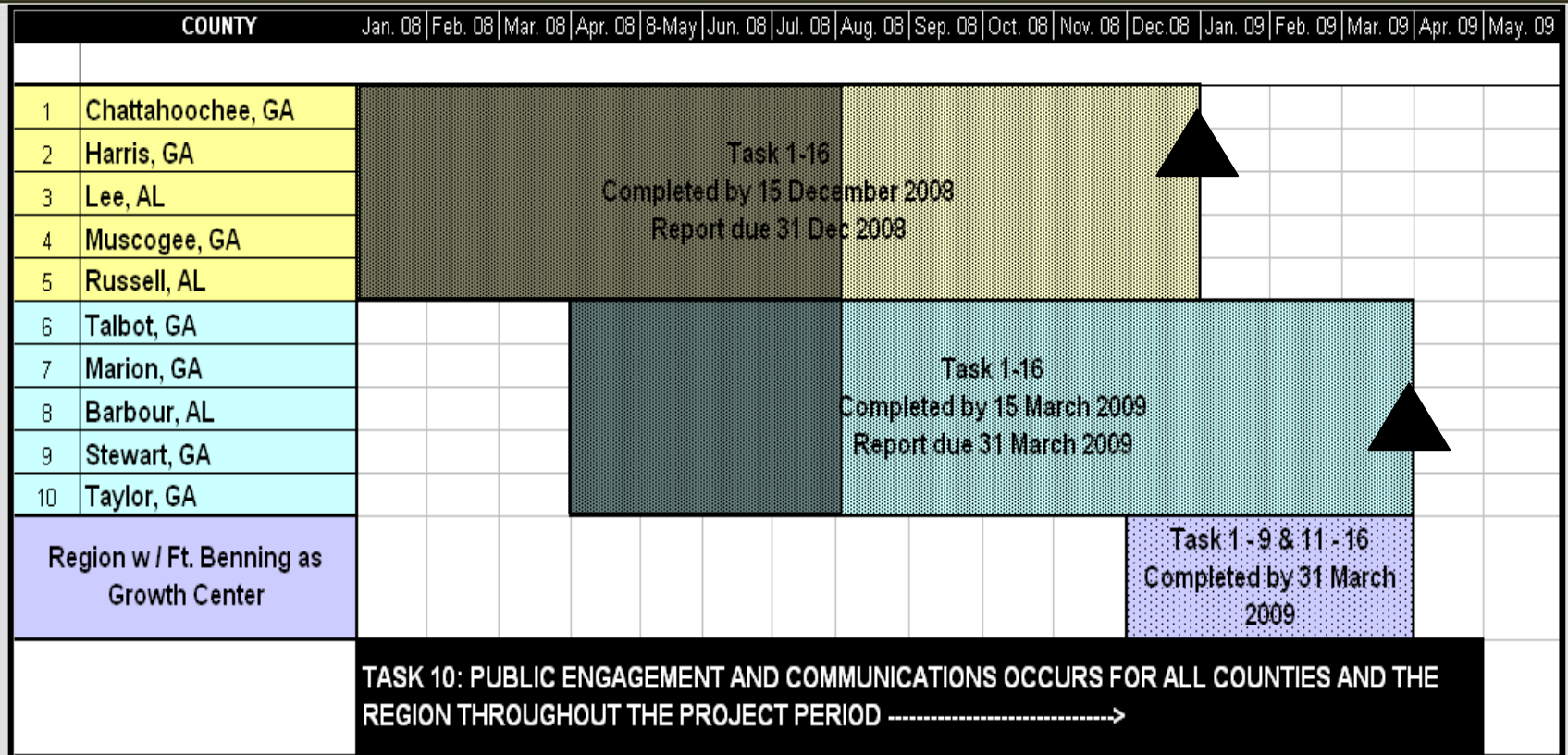
Scope (Tasks)

| # | TASK | LEAD |
|----|---|--------|
| 1 | Identification and Assessment of Existing Conditions and Issues | SAIC |
| 2 | Growth Forecasting and Modeling | RKG |
| 3 | Economic Impact Analysis | RKG |
| 4 | Transportation | SAIC |
| 5 | Public and Private Utilities | SAIC |
| 6 | Housing Market Analysis | MKT ST |
| 7 | Education | RKG |
| 8 | Sustainable Land Use Planning | EDAW |
| 9 | Regional Growth Plan Mapping | EDAW |
| 10 | Public Engagement and Communications | SAIC |
| 11 | Environmental Impacts | SAIC |
| 12 | Health and Social Services | EDAW |
| 13 | Public Safety and Emergency Services | MKT ST |
| 14 | Quality of Life | SAIC |
| 15 | Fiscal Analysis and Sustainability Plan | RKG |
| 16 | Implementation and Follow-Up | SAIC |

Project Process



Schedule (County View)



- First five county plans (Tier 1) completed Dec 2008
- Remaining counties (Tier 2) and regional plans completed Apr 2009

Task Force Meeting Objectives

- Kick-Off Task Force Process
- Review Task Methodology
- Review Existing Conditions & Issues
- Discuss Future Traffic Growth Projections
- Discuss and Confirm Way Ahead

Members / Stakeholder

TRANSPORTATION TASK FORCE MEMBERS

Mike Smith, P.E.

Lead Engineer, SAIC

mike.smith@saic.com

314.315.8637

Aruna Mathuranayagam, P.E.,P.T.O.E.

Traffic Engineer, SAIC

aruna.mathuranayagam@saic.com

405.478.5353

Tom Kuntz, AICP

Transportation Planner, SAIC

tom.kuntz@saic.com

405.478.5353

STAKEHOLDERS

- Local Government Officials and Agencies (Cities and Counties)
- Regional Agencies (RDCs & COGs)
- State and Federal Officials and Agencies
- Economic Development Agencies (State and Local)
- Public and Private Industry Service Providers
- Special Interest Groups

1st Workshop – Overview & Issues

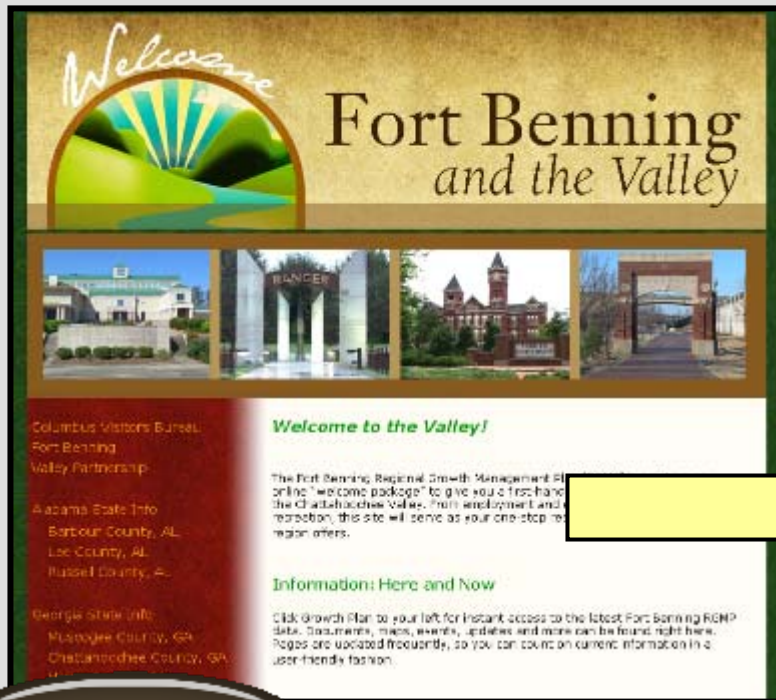
2nd Workshop – Findings & Recommendations

Task Force Responsibilities

- 1) Review task, scope and methodology
- 2) Confirm existing conditions and planned improvements
- 3) Establish points of contact within stakeholder agencies
- 4) Confirm future traffic growth projections and traffic distribution
- 5) Review traffic analysis findings and recommendations
- 5) Estimate construction costs and identify funding sources
- 6) Conduct community meetings regarding course actions and Plan status
- 7) Provide guidance in Plan implementation

Project Website

- www.fortbenningandthevalley.com



Growth Plan

Click the Growth Plan Button

- *Schedule of Upcoming Events*
- *Documents & Maps*
- *Newsletters*

Agenda

- Project Overview
- **Task Overview & Methodology**
- Existing Conditions & Issues
- Future Traffic Growth Projections
- Smart Growth Techniques
- Discussion

Task 4 – Transportation

TASK OVERVIEW & METHODOLOGY:

- Prepare an inventory of the existing major roadway network and transportation facilities for the 10 county region
- Assess capacity, traffic operations and safety of the major roadways and intersections
- Identify and review planned developments and proposed transportation improvement programs in the 10 county region
- Existing traffic and historic growth trends for the study area Traffic Analysis Zones (TAZ)
- Future design year traffic growth from household units / population projections using ITE Trip Generation Manual
- Estimate future traffic growth using population / household projections and historic average annual traffic growth trends
- Assess impacts of BRAC growth and KIA plant
- Identify problem locations and propose recommendations
- Coordinate with stakeholder agencies, Fort Benning, local governments, non-profit organizations and other agencies

Task 4 – Transportation

10 County Region Major Highways and Arterials Inventory:

Columbus –Muscogee County, Georgia

- I-185 which crosses Harris and Columbus-Muscogee County in a North South direction between I-85 and Fort Benning, Georgia
- State Routes 1, 22SP, 85, 22 and 219

Cusseta-Chattahoochee County, Georgia

- State Routes 26, 27 and 520

Harris County, Georgia

- I-185 which crosses Harris County in a North-South direction between I-85 and Fort Benning, Georgia
- State Routes 27, 315 and 85

Marion County, Georgia

- State Routes 26 and 41

Stewart County, Georgia

- US 520 in a North-South direction passing through Richland
- State Route 27 passing through Lumpkin and Richland

Task 4 – Transportation

10 County Region Major Highways and Arterials Inventory:

Talbot County, Georgia

- State Routes 22 and 41

Taylor County, Georgia

- State Routes 8, 96 and 137

Lee County, Alabama

- I-85 which crosses Lee County in an East-West direction
- State Route 267 in a North-South direction around the west side of Auburn
- State Route 30 / US 280 / US 431 is a Northwest-Southeast direction between Auburn Opelika and Phenix City Columbia
- State Route 38 / US 280 from Auburn Opelika northwest
- State Route 8 / US 80 in an East-West direction passing through the southern portion of Lee County going from Phenix City to Tuskegee

Russell County, Alabama

- State Route 165, State Route 8 / US 80 in an East-West direction
- State Route 1 / US 431 in a North-South direction passing through Phenix City and Mt Olive Church

Task 4 – Transportation

10 County Region Major Highways and Arterials Inventory: Barbour County, Alabama

- SR 1 / US 431 a North-South direction passing through Eufaula
- SR – 10 in an East-West direction passing through Blue Springs and Clio
- SR – 131 from Eufaula northwest
- SR – 6 / US 82 in a Northeast-Southwest direction passing through Baker Hill

Agenda

- Project Overview
- Task Overview & Methodology
- **Existing Conditions & Issues**
- Discussion

Task 4 – Transportation

ROADWAYS WITH IDENTIFIED CONGESTION:

Columbus –Muscogee County, Georgia

- Buena Vista Road, Double Churches, Forest Road, Fort Benning/Brennan, Lee/Summerville, Macon Road, Manchester Expressway, US 280, US 80 (13th St.) and US 80 (J.R. Allen Pkwy), Veterans Parkway, Victory Drive, Whitesville Road and Whittlesey Road

Cusseta-Chattahoochee County, Georgia

Harris County, Georgia

Marion County, Georgia

Stewart County, Georgia

Talbot County, Georgia

Taylor County, Georgia

- Projected congestion along major highways

Task 4 – Transportation

ROADWAYS WITH IDENTIFIED CONGESTION:

Lee County, Alabama

- Major highways including portions of I 85, US 280, US 431 and State Routes 267,30,38,8

Russell County, Alabama

- US 80, US 431 and State Routes 1,8,165

Barbour County, Alabama

- US 82, US 431 and State Routes 1,6,8,10,131,165

Task 4 – Transportation

ROADWAYS WITH IDENTIFIED SAFETY CONCERNS:

Highways with greater than average crash rate,

Lee County, Alabama

- Portions of I-85
- SR - 30 / US 280 / US 431 northwest of Columbus - Phenix
- SR -169 southeast of Columbus - Phenix
- SR 38 / US 280 northwest of Auburn - Opelika
- SR 14 west of Auburn
- SR 147 north of Auburn
- SR 51 south of Auburn
- SR 15 northeast and southwest of Auburn

Russell County, Alabama

- SR 26 west of Seale
- SR 169 north of Seale
- SR 165 south of Phenix City
- SR 51 north of Hurtsboro

Task 4 – Transportation

FORT BENNING TRAFFIC CONCERNS:

- Dixie Road at Ingersoll Street – Capacity
- Lindsay Creek Parkway at 1st Division Road – Capacity
- Dixie Road at 1st Division Road – Capacity
- Fort Benning Boulevard at Custer Road – Capacity
- 1st Division Road Congestion
- Lumpkin Road at Marne Road (NB and SB) – Capacity
- 11th Airborne Division Road and Custer Road – Capacity
- 11th Airborne Division Road and 187th Infantry Regiment Street

Smart Growth Strategies

- ❑ Pedestrian-ways and bikeways
- ❑ Smart parking plans
- ❑ Transit oriented plans and preferred routes
- ❑ Preferred truck corridors for freight movement
- ❑ Change in design speeds
- ❑ Access Management
- ❑ Preferred roadway widths and geometrics
- ❑ Turn Restrictions by time-of-day, median, channelization
- ❑ Intersection traffic control and pedestrian access
- ❑ Corridor coordination
- ❑ Super Streets
- ❑ Signal coordination and major street prioritization
- ❑ Reversible lanes
- ❑ HOV lanes
- ❑ Planned toll roads
- ❑ Multimodal travel (e.g. bike racks at bus stops and transit vehicles)

Task 4 – Transportation

WAY AHEAD:

- Focus on major highways, roads, and intersections as identified
- Assess capacity, safety, geometry and signalization improvements for future traffic demand
- Identify Truck routes and site-specific improvements
- Assess locations for application of Smart Growth techniques
- Assess Fort Benning entry gate traffic operations and improvements
- Identify highway and roadway pavement sections requiring rehabilitation

Agenda

- Project Overview
- Task Overview & Methodology
- Existing Conditions & Issues
- **Discussion**

Discussion

- Task Methodology
- Existing Conditions & Issues
- Outstanding Data Requirements
- Transportation Improvement Projects
- Smart Growth Techniques

Transportation

DOT and Other Metropolitan Area Roadway Network:

- Preferred annual average growth rate for traffic projections?
- Traffic volume and crash data information for roadway sections not included within the DOT database?
- Highway/roadway sections with operational and safety concerns?
- Planned transportation improvement projects in place to alleviate these problems?
- Other proposals to be considered as part of the study?
- Recommendations for improvements needed to metropolitan area roadway network not maintained by Georgia DOT or Alabama DOT
- Recommendations or plans for implementing smart growth techniques, public transportation proposals, corridor coordination plans, super streets, interchange improvements and modifications, Intelligent Transportation Systems (ITS) deployment, etc.
- Identify roadway sections requiring pavement rehabilitation and maintenance upgrades
- Suggest preferred improvement type, location and funding source
- Auburn University Traffic concerns and other related issues?

Transportation

Fort Benning and Related Access and Traffic Issues:

- Traffic volume, crash data and other traffic information for access roadways and gates?
- Peak hour traffic operational concerns at the access gates and surrounding roadway network?
- Traffic crashes and safety concerns within the Fort Benning area roadway network and access gates?
- Transportation documents outlining Fort Benning operations and safety in addition to the U. S. Corps of Engineer's "Fort Benning Comprehensive Traffic Study" dated February 2007?
- Adopt trip generation data for the BRAC changes and it's impact on the surrounding roadway network from the above report.
- Presumed locations of heavy trip attractions due to BRAC Growth?
- Planned transportation improvement and safety projects in place and the affiliated agencies?
- Recommendations for any future required access improvements?
- Recommendations for innovative vehicle inspection methods at the access gates to improve traffic flow?
- Funding sources/options?

Transportation

County and Other Non-Metropolitan Area Roadway Network:

- Traffic volume and crash data information for county roads/highway sections not included within the DOT database?
- Highway/roadway sections with operational and safety concerns?
- Planned transportation improvement projects in place to alleviate these problems?
- Other proposals to be considered as part of the study?
- Recommendations for improvements needed to county and other non-metropolitan area roadway network not maintained by Georgia DOT or Alabama DOT
- Identify roadway sections requiring pavement rehabilitation and maintenance upgrades
- Recommendations or plans for implementing smart growth techniques, public transportation proposals, corridor coordination plans, super streets, interchange improvements and modifications, Intelligent Transportation Systems (ITS) deployment, etc.
- Suggest preferred improvement type, location and funding source

Transportation

Transportation Improvements:

- Identify phased transportation improvements in place to meet the future (2030) projected needs, in 5 year increments?
- Outstanding planned programs or improvements not part of any existing studies?
- Concerns to be addressed in future recommendations?
- Estimated increase in demand for transportation personnel or infrastructure funding due to BRAC growth; Identify funding sources?
- Currently available funding sources that are not being fully utilized

Transportation

Coordination between Member Agencies:

- Existing coordination process between transportation agencies in identifying problem locations and proposing planned improvements - Georgia and Alabama DOT, Metropolitan Governments, MPOs, County Governments, Transit Agencies, and other jurisdictions.
- Implementation process and funding of any coordinated transportation project
- Transportation Agencies and Fort Benning
- Existing partnership organizations
- Improvements to existing partnerships
- Suggestions to improve future coordination between member agencies
- Partnerships between Fort Benning, City, County, Schools, Colleges and other agencies / entities
- Future partnership organizations

Reports and Deliverables

Transportation

Contacts:

Key technical transportation contacts in your agency

| Name | Contact Information (phone or email if available) |
|------|---|
|------|---|

Closing Remarks

THIS MEETING:

- Overview
- Methodology
- Conditions & Issues
- Discussions



NEXT MEETING

- ~November 2008 (Tier 1)
- Draft Findings/Recommendations



Contact Information



Dan Reynolds

Project Manager, SAIC

dreynolds@thevalleypartnership.com

706.536.7180

Mike Smith, P.E.

Transportation Lead Engineer, SAIC

mike.smith@saic.com

314.315.8637

www.fortbenningandthevalley.com