



The Fort Benning Regional Growth Management Plan is funded by a grant from the Department of Defense, Office of Economic Adjustment, an agency charged with helping BRAC-affected communities adjust to the impacts of mission changes at military installations

Fort Benning

REGIONAL GROWTH MANAGEMENT PLAN

Social Service Task Force Meeting

September 19, 2008



In association with:



Task Force Meeting #1 Objectives

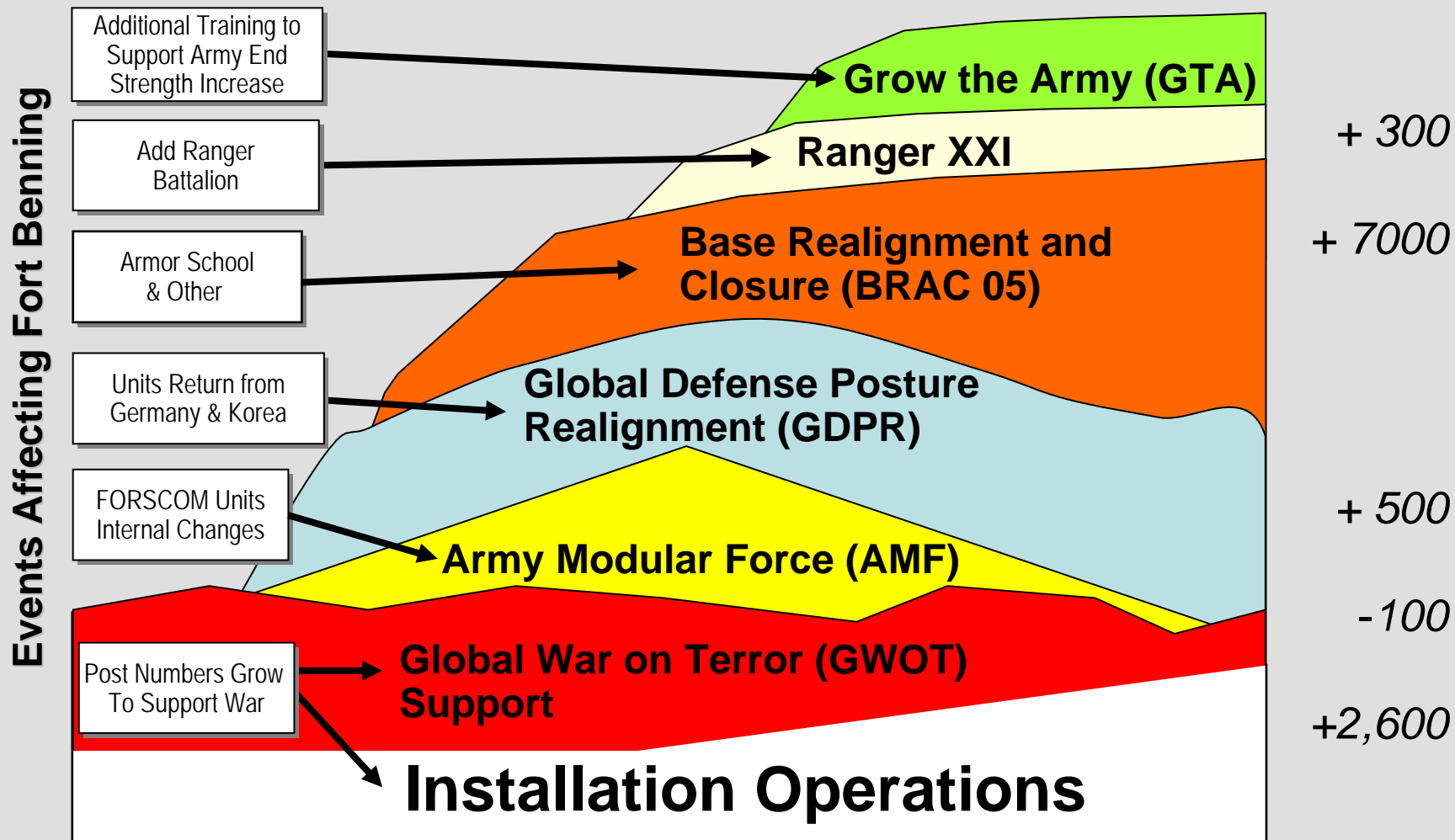
- Kick-Off Task Force Process
- Review Task
- Review Social Service Indicators
- Review Initial Findings
- Growth Projections
- Discuss Initial Issues
- Discuss and Confirm Way Ahead

Regionalism is the Key

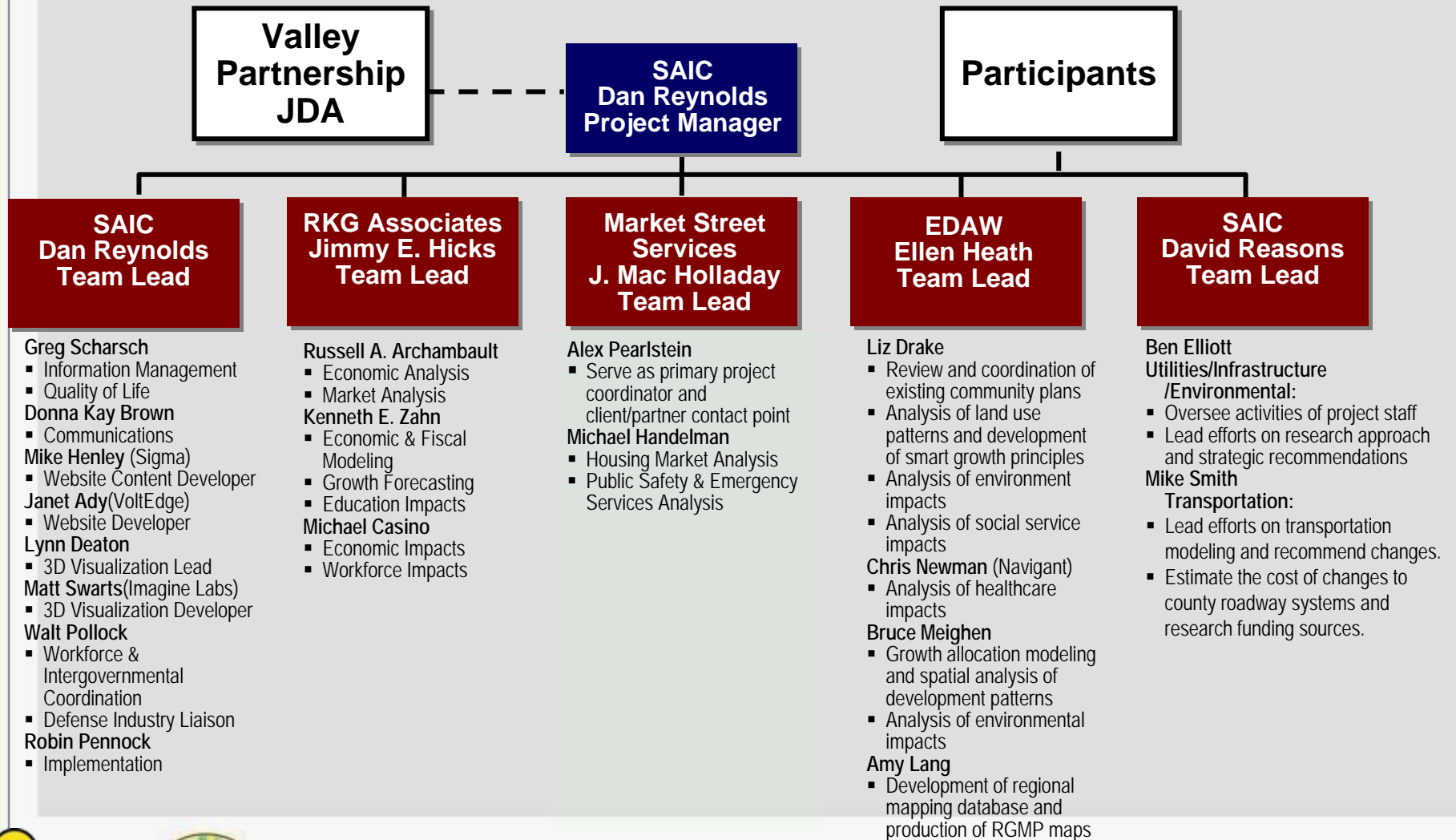
"Coordination and Synchronization Continue To Be Our Greatest Strengths"
Major General Walter Wojdakowski
Commanding General, Fort Benning, Alabama and Georgia



Fort Benning Transformation



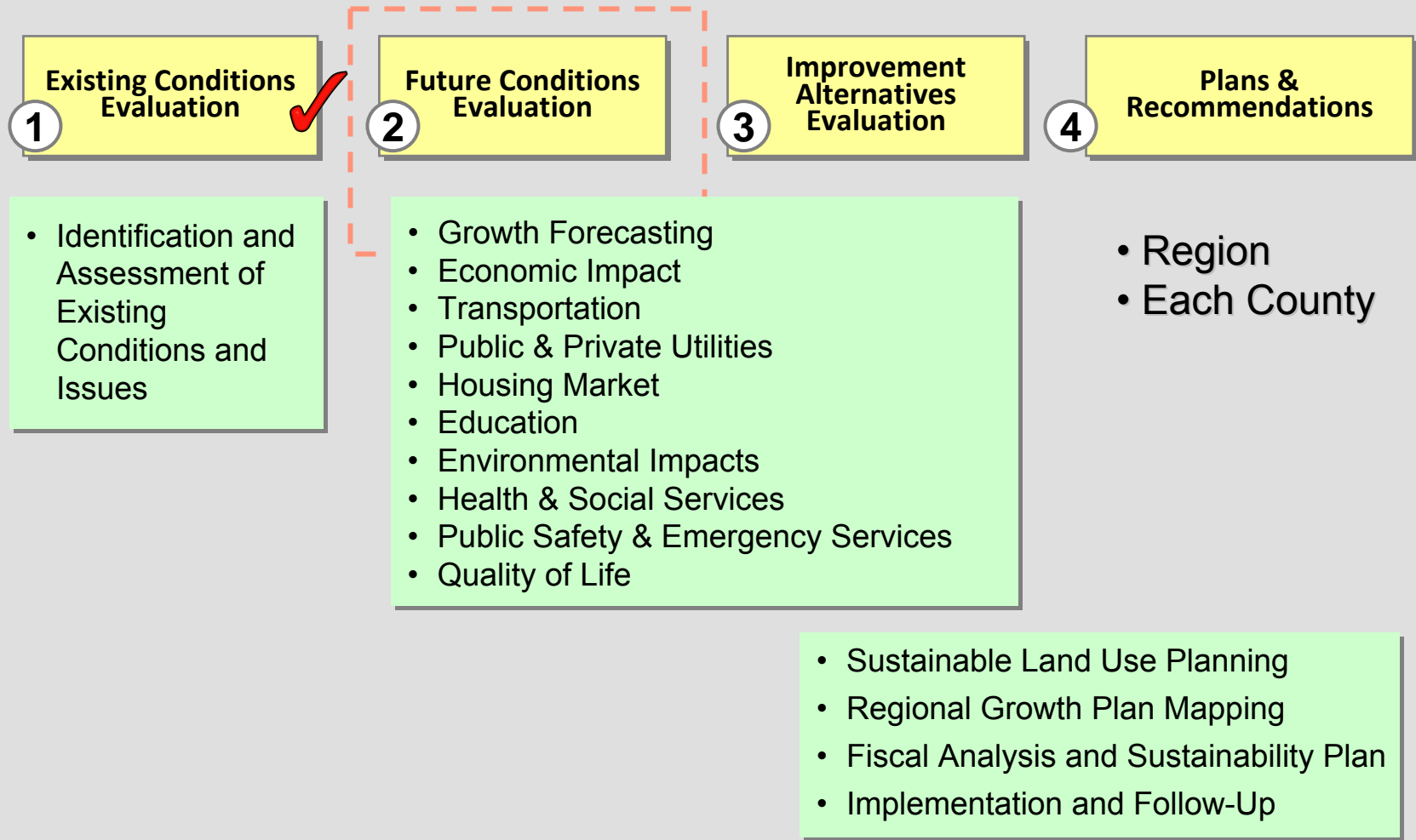
Project Team Organization



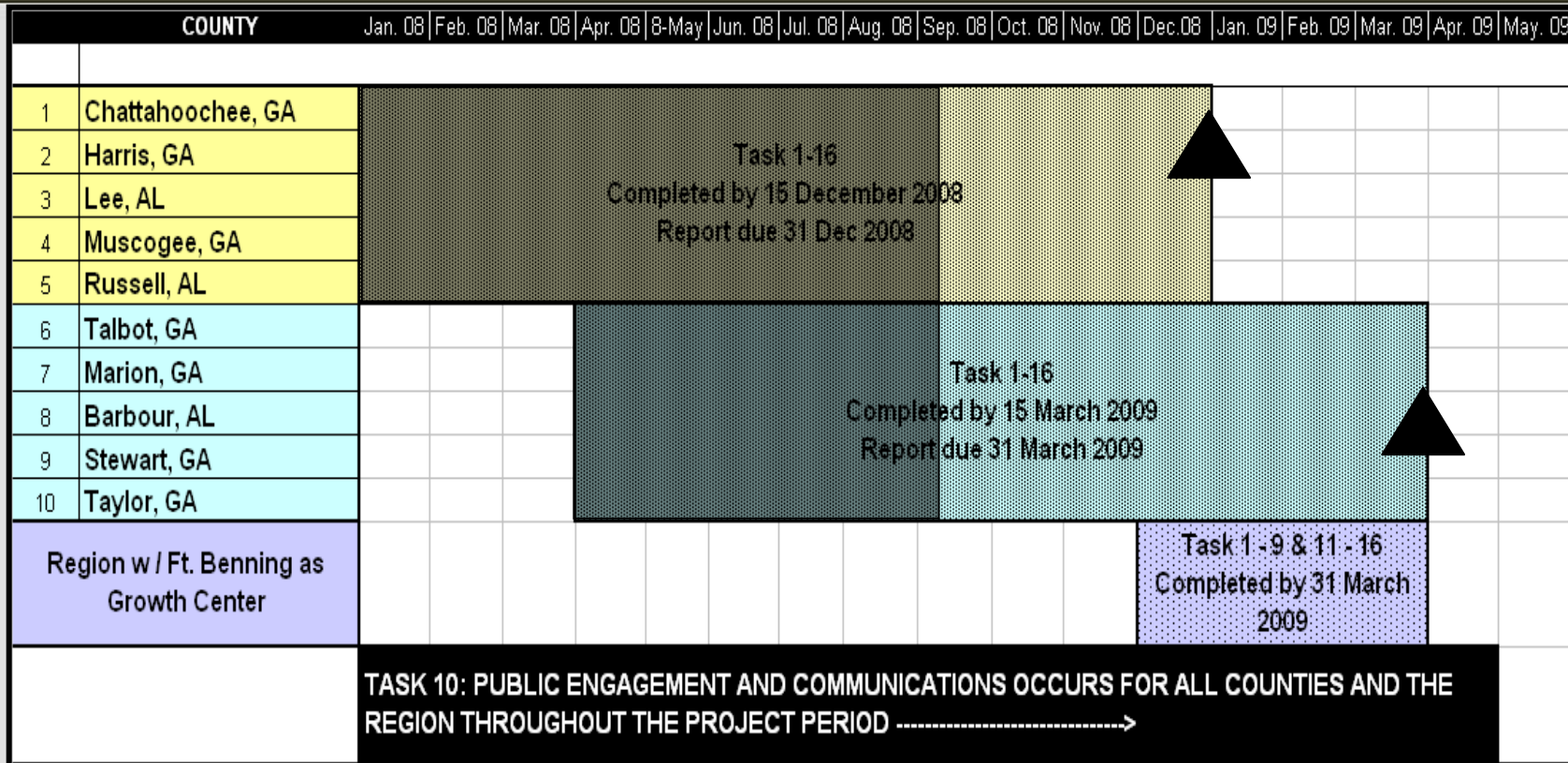
Scope (Tasks)

#	TASK	LEAD
1	Identification and Assessment of Existing Conditions and Issues	SAIC
2	Growth Forecasting and Modeling	RKG
3	Economic Impact Analysis	RKG
4	Transportation	SAIC
5	Public and Private Utilities	SAIC
6	Housing Market Analysis	MKT ST
7	Education	RKG
8	Sustainable Land Use Planning	EDAW
9	Regional Growth Plan Mapping	EDAW
10	Public Engagement and Communications	SAIC
11	Environmental Impacts	SAIC
12	Health and Social Services	EDAW
13	Public Safety and Emergency Services	MKT ST
14	Quality of Life	SAIC
15	Fiscal Analysis and Sustainability Plan	RKG
16	Implementation and Follow-Up	SAIC

Project Process



Schedule (County View)



- First five county plans (Tier 1) completed Dec 2008
- Remaining counties (Tier 2) and regional plans completed Apr 2009

Stakeholder Task Forces

TASK FORCES

1. Economic Impact
2. Education
3. Funding for Region
4. Health Care & Social Services
5. Housing
6. Infrastructure & Land Use
7. Public Services
8. Quality of Life
9. Strategic Communications
10. Transportation
11. Workforce

Task Force Meeting # 1

- Presentation of initial findings
- Discussion

Task Force Meeting # 2

- Presentation and discussion of findings/recommendations
- Implementation strategies

Task Force Responsibilities

- 1) Review task, scope and methodology
- 2) Confirm existing conditions and known issues
- 3) Establish points of contact for data collection
- 4) Review findings and recommendations
- 5) Communicate with community regarding actions and status of Plan
- 6) Provide guidance in Plan implementation

Agenda

1. Task Description
2. Social Service Providers
3. Social Service Indicators
4. Review Initial Findings
5. Initial Issues
6. Population Growth Projections
7. Discussions
8. Wrap up discussions & Q/A



Social Services Task

TASK OVERVIEW:

- Inventory of Social Services providers in the region
- Identify current and projected gaps in Social Services
 - Identify current service levels and deficiencies
 - Identify expected increase in demand for these services
- Assess additional facilities/ personnel needs to meet the demand for services
 - Identify opportunities for and barriers to spousal employment in Social Services
- Prioritize action steps to resolve current and projected services deficiencies
- Identify possible funding options
- Identify methods for improved regional coordination and cooperation between social service providers
 - Prioritized steps for building regional coordination between City, County and Fort Benning officials to meet the expected growth in demand for Social Services

Social Service Providers




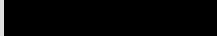
- Initial inventory taken
 - Verify major providers are listed
- Bulk of providers target children, youth and family needs
- Mostly concentrated in urban areas
- Few rural providers
 - Some service multiple counties in the region

Social Service Indicators

- Measure and quantify the need for social services
 - Sets baseline for future comparison
- Sets benchmarks for effectiveness of service provision
- Indicators reviewed are:
 - Infant mortality
 - Teen pregnancy
 - Child abuse
 - Child poverty
 - Family poverty
 - Violent crime
 - Educational attainment
 - Binge drinking

Indicators- Overall

GEOGRAPHY	Infant Mortality	Teen Pregnancy	Child Abuse	Child Poverty	Family Poverty	Violent Crime	Educational Attainment	Binge Drinking
Georgia								
Chattahoochee								
Harris								
Marion								
Muscogee								
Talbot								
Taylor								
Alabama								
Barbour								
Lee								
Russell								

	Indicator 25% or more better than the home state
	Indicator 25% or more worse than the home state
	Indicator similar to the home state
	No data available

- Compared each County's indicator performance to State performance
 - Chattahoochee, Harris and Lee Counties have more positive social service indicators than the rest of the region.
 - Counties with the greatest degree of social service need include Columbus-Muscogee, Barbour and Russell Counties.
- Looking across the region, child poverty and child abuse are widespread issues where the region lags the standard set by the states.

Indicator- Infant Mortality Rates

- Reflect the quality/ availability of pre-natal care
 - Affordability and health care coverage
- Reflect the quality of medical services available in the case of a difficult child delivery
 - Urbanized areas with major hospitals that handle a large volume of births are likely to see lower infant mortality rates.
- Muscogee County rate: 14.3 per 1,000 births much higher than Georgia rate of 8.1
 - Only Georgia county in region with data available
- Barbour, Lee and Russell Counties rates all higher than Alabama rate

Infant Mortality Rate	
GEOGRAPHY	2006
<i>Georgia</i>	8.1
Muscogee	14.3

Infant Mortality Rate	
GEOGRAPHY	2000
<i>Alabama</i>	9
Barbour	13
Lee	11
Russell	23

- Source: Annie E. Casey Foundation CLIKS

Indicator- Teen Pregnancy Rate

- Teen pregnancy rates are an indicator for the teenager and the child.
 - Woman who become pregnant in their teens often face less favorable educational, financial, and marital outcomes.
 - Children of teenage mothers often lag in their education, health, and general development.
- Indicator of the adequacy of existing social services
- Indicator of the need for services for the new mother and child.
- Georgia rates births to teens aged 15-17
- Alabama percentage of births to women between 10-19 and therefore not a true teen pregnancy rate

- Georgia rates births to teens aged 15-17

Teen pregnancies, ages 15-17 (rate per 1,000)	
GEOGRAPHY	2006
Georgia	37.7
Chattahoochee	20.2
Harris	33
Marion	57.1
Muscogee	56.2
Talbot	NA
Taylor	27.6

- Alabama percentage of total births to women between ages 10-19 (not a true teen pregnancy rate)

Birth to unmarried teens rate (PERCENT)	
GEOGRAPHY	2000
Alabama	11%
Barbour	15%
Lee	9%
Russell	15%

Indicator- Instances of Child Abuse

- Child abuse is a sign of social breakdown
 - preventable through appropriate interventions and services
- Indication of unmet social needs for the child involved and the family unit as a whole.
- Alabama indicator: children with *indications* of abuse
 - Lee County slightly below average
 - Barbour slightly above average
 - Russell higher than average
- Georgia *substantiated* incidents
 - higher for Harris, Marion, Talbot, and Taylor counties
 - lower for Muscogee and Chattahoochee counties

Children With Indication of Abuse or Neglect Rate (rate per 1,000)	
GEOGRAPHY	2001
Alabama	8
Barbour	11
Lee	7
Russell	13

Substantiated incidents of child abuse and/or neglect (rate per 1,000)		
GEOGRAPHY	1995	2006
Georgia	13.6	16.1
Chattahoochee	17.3	4.4
Harris	20.4	20.5
Marion	10.1	17.4
Muscogee	17.1	11.7
Talbot	28.1	20.5
Taylor	23.3	21.7

Indicator- Children Living in Poverty

- Social programs are frequently targeted towards children living in poverty in order to improve their opportunities
 - after-school programs, head start, and targeted public health programs.
- Defined as children under 18 years of age living in households with incomes below the federal poverty level.

• In Alabama:

- Barbour County has highest rate
- Russell County is also high rate
- Lee County has lower rate

Children Living In Poverty (Percent)	
GEOGRAPHY	1999
Alabama	21%
Barbour	37%
Lee	16%
Russell	27%

• In Georgia

- Rates over 30% in Talbot, Taylor, and Marion counties
- Chattahoochee and Harris rates were below 20% this year

Children Living In Poverty (Percent)	
GEOGRAPHY	2005
Georgia	20.30%
Chattahoochee	19.80%
Harris	12.50%
Marion	35.80%
Muscogee	28.70%
Talbot	31.00%
Taylor	36.50%

Indicator- Families Living in Poverty

- Families living in poverty is a prime indicator of social need.
 - Poverty is associated with a host of social ills, from homelessness, to poor physical health, to crumbling family structure.
- Families living in poverty is highly correlated with family type.
 - Married-couple families are much less likely to be in poverty status than other family types.
- Poverty status and family structure are inter-related issues that must be considered and addressed in concert.

**Percent in Poverty Status of Families By Family Type
In the Past 12 Months**

GEOGRAPHY	MARRIED-		
	ALL FAMILIES	COUPLE FAMILY	OTHER FAMILY
<i>Alabama</i>	12.60%	5.40%	31.70%
Lee County	12.50%	3.60%	32.80%
<i>Georgia</i>	11.10%	4.70%	26.90%
Muscogee County	12.40%	3.20%	28.50%

Indicator- Violent Crime Rate

- Measuring and controlling crime rates is one of the prime levers for building a stronger community
- Although the police take the lead in fighting crime, a wide network of government agencies, non-profits, and community organizations all have a roll in dealing with crime prevention strategies
- Data only available for Georgia
 - Most counties well below State rate
 - Columbus-Muscogee almost double the State rate

Violent Crime rate (per 1,000 crimes) age 17 or older

GEOGRAPHY	2005
<i>Georgia</i>	6.9
Chattahoochee	1.9
Harris	1.3
Marion	LNE
Muscogee	13.8
Talbot	LNE
Taylor	3.1

Indicator- Educational Attainment

- Lower educational attainment is strongly correlated with other indicators of social need.
 - Persons of lower educational attainment are less likely to be in the workforce, are less likely to be employed, and are more likely to be employed at poverty wages.
 - Higher educational attainment is also linked to better health and higher levels of entrepreneurship.
- 18% of Muscogee County's adults have a less-than-high-school education
- 13% of Lee County's adults have less-than-high-school education

Educational Attainment for Population 25 Years and Older

GEOGRAPHY	Less than High School	High School Graduate	Some College	College Graduate
<i>Alabama</i>	19.40%	32.40%	26.50%	20.40%
Lee County	13.30%	27.30%	28.10%	31.20%
<i>Georgia</i>	16.70%	30.50%	26.50%	26.20%
Muscogee County	18.20%	29.90%	30.70%	21.10%

Indicator- Binge Drinking

- Binge drinking is not the same as alcoholism,
 - chronic binge drinking can lead to alcoholism
 - serious consequences can result from occasional binge drinking episodes.
- This indicator is intended to gauge the general level of abuse of alcohol in the community.
 - Data from West Central Georgia Public Health District, which includes the counties of Chattahoochee, Clay, Crisp, Dooly, Harris, Macon, Marion, Muscogee, Quitman, Randolph, Schley, Stewart, Sumter, Talbot, Taylor, and Webster.
- Overall area has slightly higher rate than State
- Men at higher risk for binge episodes

Percent of Adults who Binge Drink			
Georgia Public Health Districts, 2000 - 2004			
DISTRICT	TOTAL %	MALE %	FEMALE %
<i>Georgia</i>	12.40%	19.70%	5.70%
West Central (Columbus)	14.90%	24.30%	6.30%

Initial Findings

- Family stability is a major bulwark against many social problems
- Family status is linked to poverty status
- Social service indicators that were widely problematic in the region include child poverty and child abuse
- Many indicators showing greatest need are in rural counties with the least access to social services
- The percentage of children living in poverty is surprisingly high in the area

Initial Findings

- Rural areas have much lower crime rates than urban areas in the region
- As many as 1 in 4 males in the region may have a problem with binge drinking
- Even with a strong economy, less educated workers have limited employment opportunities
- A disconnect between service providers on and off-post
- Funding for social services tends to be linked to major employers, which tend to favor urbanized areas
- Funding for social services has become critical as government sources have decreased

Potential Issues

- Major challenges facing the region's social service providers include:
 - a growing homeless population
 - an increase in economic migrants and immigrants
 - a lack of start-up jobs for less educated workers
 - a lack of funding resources to expand programs and facilities

Discussion

- Are the indicators appropriate?
- Are there specific gaps that you view in your areas of expertise?
- What are the emerging areas of interests in light of the population coming in and its demographics?
- What regional strategies do you find promising?
- What financing strategies do you find promising?

Closing Remarks

THIS MEETING:

- Overview
- Methodology
- Issues
- Discussions



NEXT MEETING

- November 2008



Contact Information



Larry Crane

Project Director, The Valley Partnership Joint
Development Authority
lcrane@columbusgachamber.com

706-596-7009

www.thevalleypartnership.com

Dan Reynolds

Project Manager, SAIC

dreynolds@thevalleypartnership.com

706-536-7180

www.fortbenningandthevalley.com

Liz Drake

Task Leader, EDaw

Liz.drake@edaw.com

404-870-5339